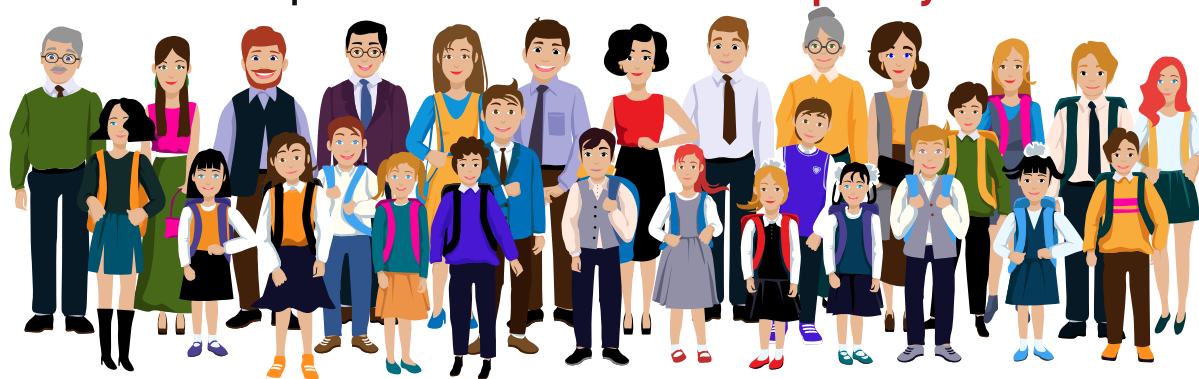


You can't have ***active engagement in learning*** with Education Agencies running schools. There must be a working relationship that ***helps schools help students*** achieve their full potential. **We need simplicity and intimacy.**

### Actively Engage

- **Administrators**
- **Staff** • **Teachers**
- **Parents** • **Students**



The proposed reform structure reduces school administrative time and staffing requirements. District Commissioners will supervise four Commission Offices employing approximately 5-7 ***Specialists working as a team with Schools.***

There will be ongoing communications and interaction with Administrators, Teachers, and Staff. For example, Commissioners and Office Specialists will routinely visit schools and participate in local Alliance events with parents.

**The Citizen Controlled Education System will have a “face” and “personality”.**